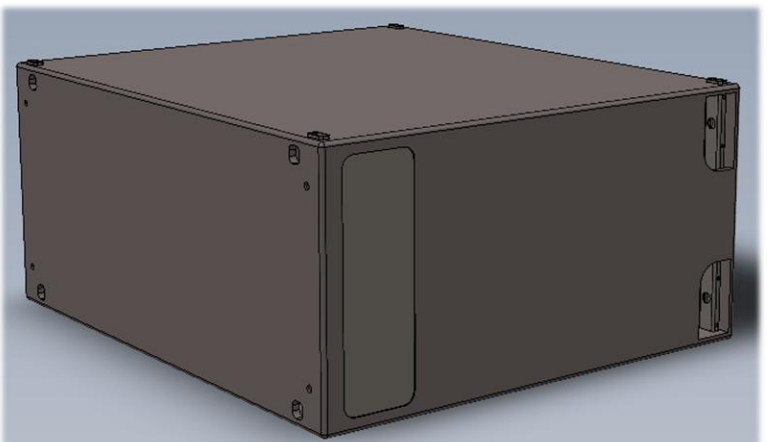
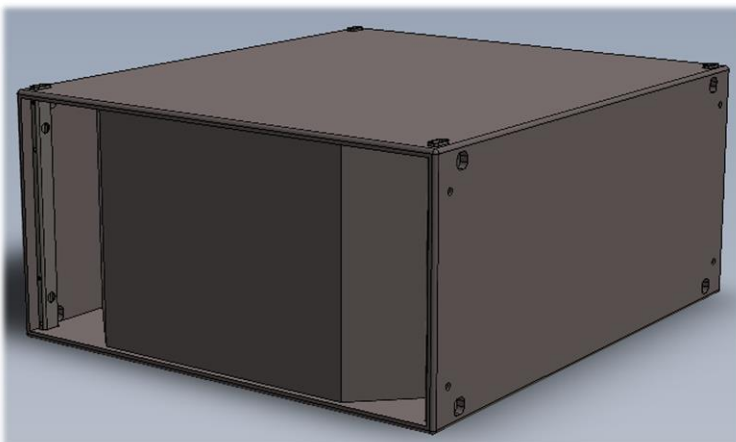
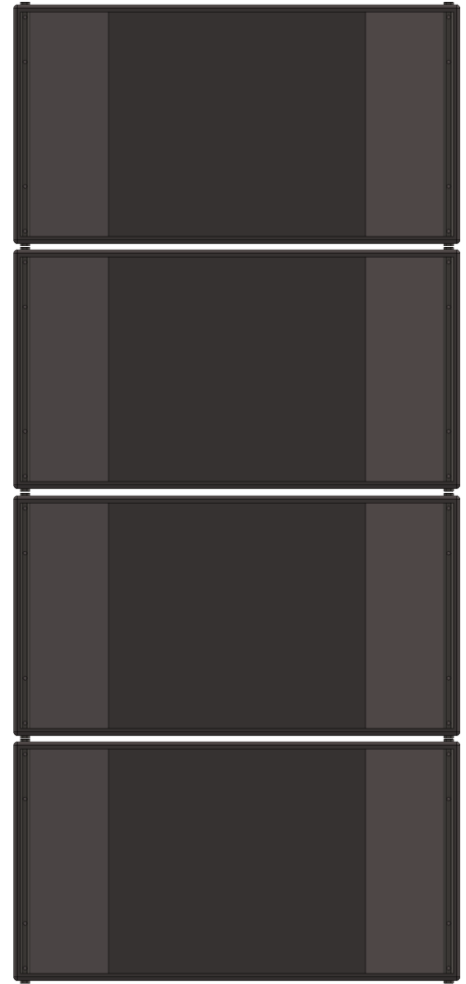


MP-21 LF Transducer System

The MP-21 is our flagship transducer system that was developed specifically for high-intensity acoustic testing across low frequencies. It incorporates our proprietary Power Density Optimization process to achieve previously unattainable test levels. MSI-DFAT has successfully completed over 150 acoustic tests using the MP-21.

Operating Frequency Range.....20 Hz – 300 Hz
Configuration.....Fully Horn Loaded
Acoustic Power Output.....
>100 acoustic watts/m², 28 Hz – 200 Hz
Input Connection.....XLR, RJ45, PowerCON
Dimensions.....47.4" x 53.9" x 24"
(1203.9mm x 1369mm x 609.6mm)
Weight.....360 lbs. (163.3 kg)
Enclosure Material.....Baltic Birch (void-free)
Coating.....Polyurethane

Patents Issued & Pending, see: <https://msi-dfat.com/patents>



ACCESSORIES

Base Frame: 48" x 58" x 9" (1218.5mm x 1480.8mm x 216mm)

Transport Frame: 48" x 50" x 9" (1213mm x 1265mm x 216mm)

Lift Frame*: DFAT I-beam bridle assembly, "Low-Profile" H-frame, or DFAT Forklift adapter frame

*ALL lifting frames are dependent on conditions of deployment